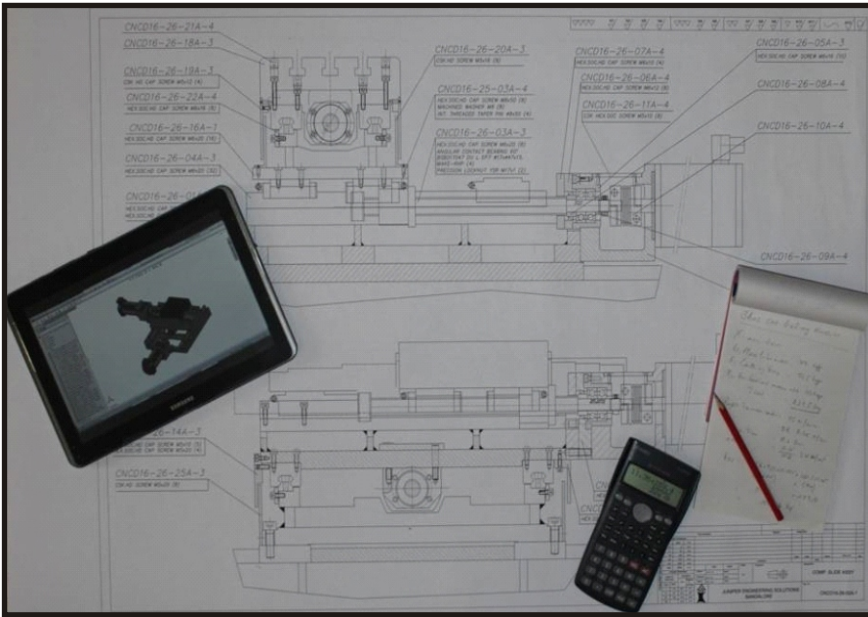


**Hello there.....calling..... Mechanical Engineers !  
Get job-fit with Juniper CAD-connect !!**



## CAD Training Courses

**Practical. Preparatory for jobs. Industry-relevant.**

Please call : +91-8050952227 or e-mail : hr@juniperengg.com for more information.

## Getting you started from Basics. Right-skilling you. Beyond college curriculum.

### Foundation primer

### From diffidence to confidence

Aim of this primer is to bridge the knowledge gap between your college education and industries' requirement. In fundamentals. To get you proficient in – materials, processes, measurements and quality management in modern manufacture.

### What is covered

- ❖ Materials for manufacture
- ❖ Manufacturing processes
- ❖ Metal cutting processes
- ❖ Limits, Fits, Tolerances & Surface finish
- ❖ Geometric Dimensioning & Tolerancing
- ❖ Engineering measurements

### Why the need

Your employer expects you to be knowledgeable on these topics. So that you know the characteristics' of the part or assembly you are modeling or designing.



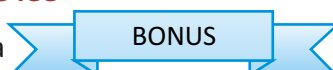
Foundation Primer Class

Symbols	Toleranced characteristics	Included tolerances
—	Straightness	-
□	Flatness	Straightness
○	Circularity (Roundness)	-
∅	Cylindricity	Straightness, Parallelism, Circularity
//	Parallelism	Flatness
⊥	Perpendicularity	Flatness
∠	Angularity	Flatness
⊕	Position	-
⊗	Concentricity, Coaxiality	-
≡	Symmetry	Straightness, Flatness, Parallelism
⊘	Circular runout, Axial runout	Circularity, Coaxiality

GD&T terms explained

### No extra fee other than CAD course fee

There is no fee for this primer. It is a



# Learn best practices. From hands-on Designers. Achieve CAD excellence.

## CAD-connect

## From confidence to competence

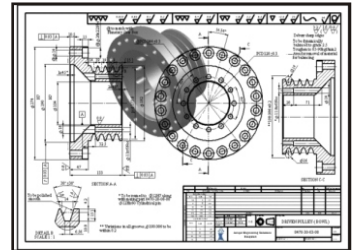
As practicing professionals, Juniper team-members have varied domain expertise. Besides CAD. In Product design, Manufacture, Assembly and Testing. So you have opportunities to build CAD competency with a cross functional flavor. Which is highly valued in the CAD profession. And makes you stand out.



A CAD Class in session

## What is covered

- ❖ Solid works basics and user interface
- ❖ Parametric Modeling
- ❖ Introduction to Sketching
- ❖ Part Modeling of casting / forging
- ❖ Drawing basics
- ❖ Sheet Metal Modeling
- ❖ Assembly Modeling
- ❖ e-drawings for parts and assemblies
- ❖ Bills of materials
- ❖



A CAD Exercise in 2D & 3D

## Advanced Training Courses From CAD landscape to Design vista.

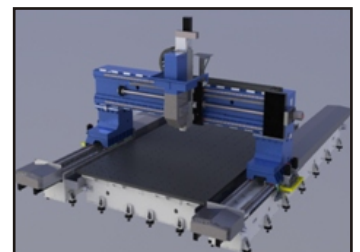
### Design-connect

### Right courses for the design-minded

Design career is exciting and rewarding - if you have the inclination. First, you have to convert a Client's idea to a Concept. And then work on your Concept. To turn the Concept in to a Reality, you need all your knowledge resources. Right from fundamentals. You must not only visualise macro view of the overall design, but micro view of detail design too.

### Focused Courses :

- ❖ Discrete Parts Design
- ❖ Machine Design
- ❖ Machine Tool Design
- ❖ Jig and Fixture Design
- ❖ Automotive Components Design
- **More Information on Request**



Design Concept



Concept-to-Reality



Training Location at Bangalore

**Juniper Engineering Solutions**

# 15, 17<sup>th</sup> Main Road, Banashankari 2<sup>nd</sup> Stage,  
Bangalore – 560 070

Phone: +91-8050952227 e-mail: hr@juniperengg.com